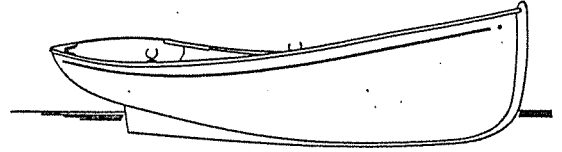


RECREATIONAL ROWING SKIFFS

4.24m/14' approx.

LOA	4.24M
BEAM	1.12M
EST. WEIGHT	33 KGS



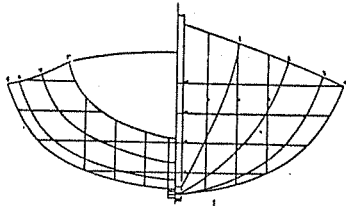
Recreational rowing is a popular form of exercise these days, akin to bicycle riding. These three boats are designed to be able to handle open water conditions, and can carry some gear as well. Fitted with a sliding seat and outriggers they become a very fast form of transport, with good stability and a comfortable amount of freeboard. Ideally they are best suited to one person rowing, but they can be re-arranged for two person rowing, or for carrying a passenger. Notes on the drawings indicate how to do this.

The flat bottomed boat is a little longer, at 4.69M LOA, and is built in plywood, 4 to 5mm thick with options for fabric reinforcement.

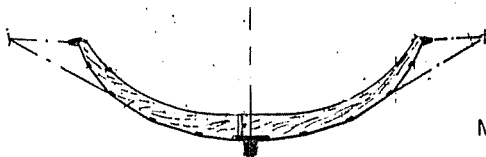
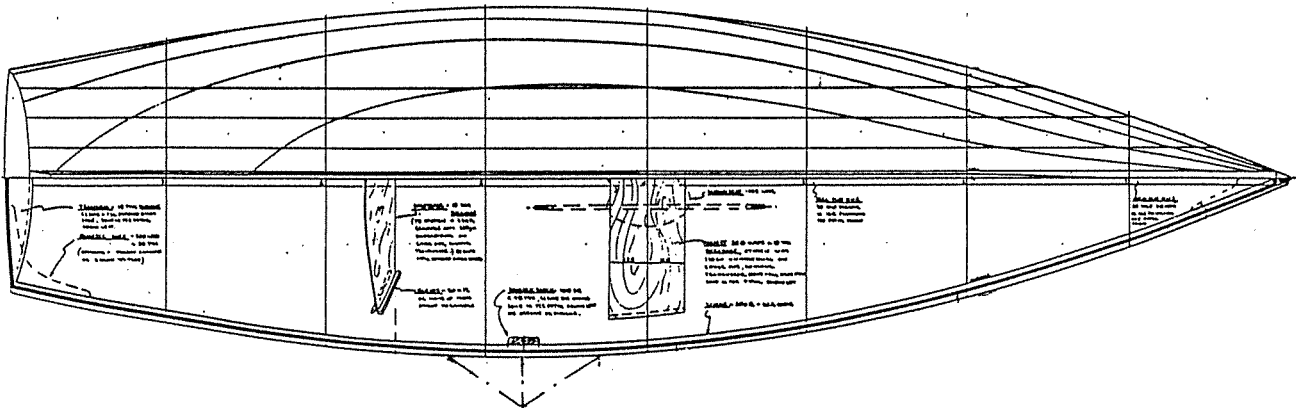
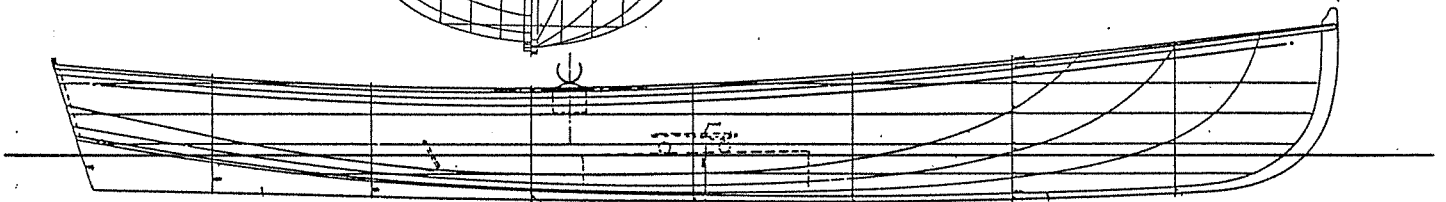
The multi straked hull is planked in plywood about 4 to 5mm thick with a 200gsm reinforcement inside and out.

The round bilge hull is designed for strip planking in 9mm balsa/veneer planks or 6 to 7mm Western Red Cedar, with a 200gsm reinforcement inside and out. This hull could also be cold moulded in thin ply or veneers, or built in lapstrake style.

- 1 construction & layout plan
- 1 full size templates to inside of planking for mould frames and stem/transom profile



ROUND BILGE HULL



MULTI STRAKED HULL

