

The Pittwater Recreational Rowing Scull.

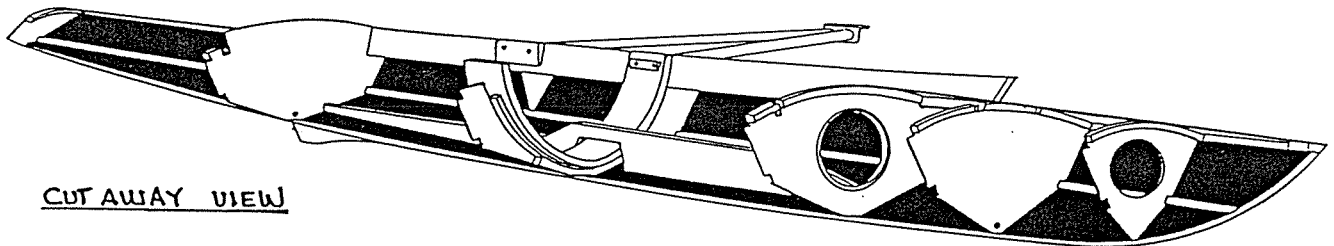
This single chine plywood hull design was developed to satisfy the need for a lightweight recreational rowing skiff that can be easily carried on a medium sized car . The hull shape was also designed to handle relatively choppy conditions, and to be easy for an inexperienced rower to become competent with in a short time.

Construction features 3mm plywood hull and deck panels, built around oregon and cedar longitudinal members and plywood bulkheads. The major stresses from the riggers are taken by a laminated flange and web frame, whilst the seat and footrest are supported on longitudinal girders. There is a choice of materials available, and it is possible to build the boat so that it weighs between 25 to 30 kgs including riggers and seat. The panels come out of single scarphed pieces of ply.

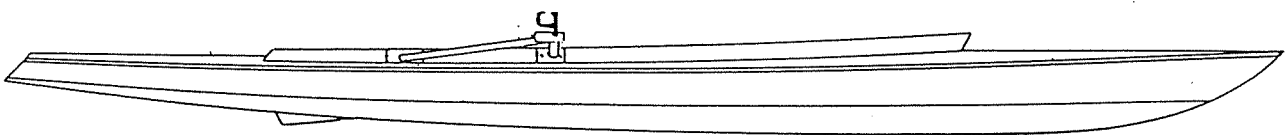
Plans cover a number of details and include full size templates for mould stations, bulkheads, and other items. It is recommended that some of the specialist items such as the seat and track, the rowlocks and oars are sourced from a supplier.

The completed boat is very attractive and can be varnished or painted. Options are given for some materials and details so that people can build a more customised boat if they wish.

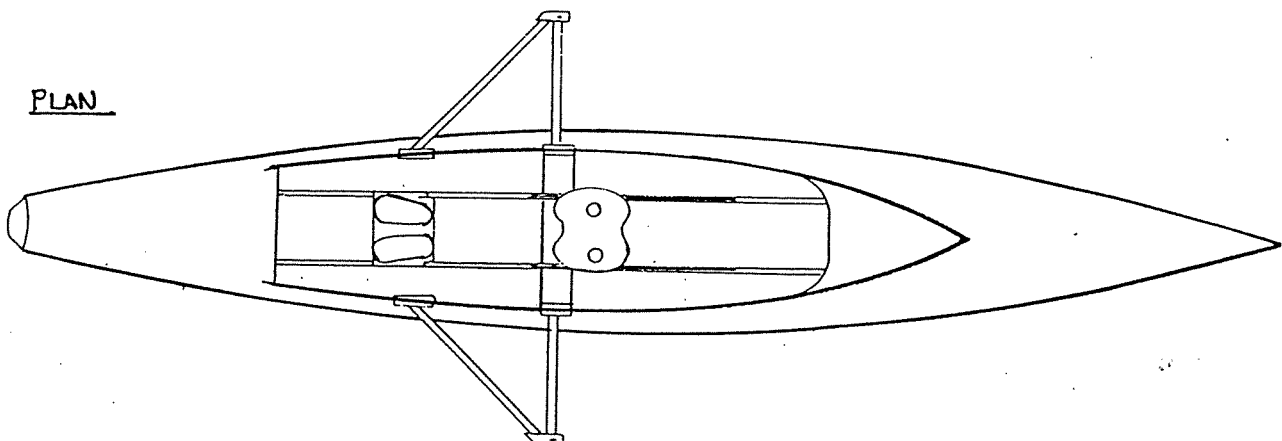
Dimensions
LOA 4.650m
BEAM 0.770m



CUTAWAY VIEW



PROFILE



PLAN